

Chapter 2

1. For a particle Newton's second law says $\vec{F} = m\vec{a} = m \left[d^2x/dt^2 \hat{i} + d^2y/dt^2 \hat{j} + d^2z/dt^2 \hat{k} \right]$.
Using Equation (2.1) and taking the necessary derivatives:

$$\frac{d^2x'}{dt^2} = \frac{d^2x}{dt^2} \quad \frac{d^2y'}{dt^2} = \frac{d^2y}{dt^2} \quad \frac{d^2z'}{dt^2} = \frac{d^2z}{dt^2}$$

Therefore

$$\vec{F} = m\vec{a} = m \left[\frac{d^2x'}{dt^2} \hat{i} + \frac{d^2y'}{dt^2} \hat{j} + \frac{d^2z'}{dt^2} \hat{k} \right] = \vec{F}'$$

2. From Equation (2.1)

$$\vec{p} = m \left[\frac{dx}{dt} \hat{i} + \frac{dy}{dt} \hat{j} + \frac{dz}{dt} \hat{k} \right]$$

In a Galilean transformation

$$\frac{dx'}{dt} = \frac{dx}{dt} - v \quad \frac{dy'}{dt} = \frac{dy}{dt} \quad \frac{dz'}{dt} = \frac{dz}{dt}$$

Therefore

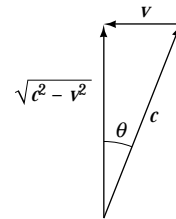
$$\vec{p} = m \left[\frac{dx'}{dt} + v \right] \hat{i} + \frac{dy'}{dt} \hat{j} + \frac{dz'}{dt} \hat{k} \neq \vec{p}'$$

However, because

$$\vec{p}' = m \left[\frac{dx'}{dt} \hat{i} + \frac{dy'}{dt} \hat{j} + \frac{dz'}{dt} \hat{k} \right]$$

the same form is clearly retained, given the velocity transformation $dx'/dt = dx/dt - v$.

3. Using the vector triangle shown, the net speed of the light coming toward mirror D is $\sqrt{c^2 - v^2}$ and the same on the return trip. Therefore the total time is



$$t_2 = \frac{\text{distance}}{\text{speed}} = \frac{2l_2}{\sqrt{c^2 - v^2}}$$

Notice that $\sin \theta = v/c$, so $\theta = \sin^{-1}(v/c) \cong v/c$.

4. As in Problem 3, $\sin \theta = v_1/v_2$, so $\theta = \sin^{-1}(v_1/v_2)$ and $v = \sqrt{v_2^2 - v_1^2}$.

5. When the apparatus is rotated by 90° , the situation is equivalent, except that we have effectively interchanged l_1 and l_2 . Interchanging l_1 and l_2 in Equation (2.3) leads to Equation (2.4).

- *6. Let n = the number of fringes shifted. From the analysis in the text

$$n = \frac{c(\Delta t' - \Delta t)}{\lambda} = \frac{v^2(l_1 + l_2)}{c^2 \lambda}$$

Solving for v and noting that $l_1 + l_2 = 22$ m,

$$v = c \sqrt{\frac{n\lambda}{l_1 + l_2}} = (3.00 \times 10^8 \text{ m/s}) \sqrt{\frac{(0.005)(589 \times 10^{-9} \text{ m})}{22 \text{ m}}} = 3.47 \text{ km/s}$$

- *7. Letting $l_1 \rightarrow l_1 \sqrt{1 - \beta^2}$ (where $\beta = v/c$) the text equation for t_1 becomes

$$t_1 = \frac{2l_1 \sqrt{1 - \beta^2}}{c(1 - \beta)} = \frac{2l_1}{c \sqrt{1 - \beta^2}}$$

which is identical to t_2 when $l_1 = l_2$, so $\Delta t = 0$ as required.

8. Because the Lorentz transformations depend on c (and the fact that c is the same constant for all inertial frames), different values of c would necessarily lead two observers to different conclusions about (say) the order or positions of two spacetime events, in violation of Postulate 1.

9. Let an observer in S send a light signal along the $+x$ -axis with speed c . According to the Galilean transformations, an observer in S' would measure the speed of the signal to be

$$\frac{dx'}{dt} = \frac{dx}{dt} - v = c - v$$

Therefore the speed of light cannot be constant under the Galilean transformations.

CHAPTER 2

10. From the Principle of Relativity, we know that the correct transformation must be of the form (assuming $y = y'$ and $z = z'$)

$$x = ax' + bt' \qquad x' = ax - bt$$

The spherical wavefront equations give us

$$ct = (ac + b)t' \qquad ct' = (ac - b)t$$

Substitute the second wavefront equation into the first:

$$\begin{aligned} ct &= (ac + b)(ac - b)t/c \\ c^2 &= (ac + b)(ac - b) = a^2c^2 - b^2 \end{aligned}$$

Now v is the speed of the origin of the x' -axis with respect to the x -axis. We can find that speed by setting $x' = 0$ which gives $0 = ax - bt$, or $v = x/t = b/a$, or equivalently $b = av$. Substituting this into the equation above for c^2 yields

$$c^2 = a^2c^2 - a^2v^2 = a^2(c^2 - v^2)$$

Solving for a :

$$a = \frac{1}{\sqrt{1 - \frac{v^2}{c^2}}} = \gamma$$

This expression, along with $b = av$, can be substituted into the original expressions for x and x' to obtain

$$x = \gamma(x' + vt') \qquad x' = \gamma(x - vt)$$

which in turn can be solved for t and t' to complete the transformations.

- *11. When $v \ll c$ we find $1 - \beta^2 \rightarrow 1$, so

$$\begin{aligned} x' &= \frac{x - \beta ct}{\sqrt{1 - \beta^2}} \rightarrow x - \beta ct = x - vt \\ t' &= \frac{t - \beta x/c}{\sqrt{1 - \beta^2}} \rightarrow t - \beta x/c \cong t \\ x &= \frac{x' + \beta ct'}{\sqrt{1 - \beta^2}} \rightarrow x' + \beta ct' = x' + vt' \\ t &= \frac{t' + \beta x'/c}{\sqrt{1 - \beta^2}} \rightarrow t' + \beta x'/c \cong t' \end{aligned}$$

12. a) Conversion $100 \text{ km/h} = 27.77 \text{ m/s}$ so

$$\beta = v/c = (27.77 \text{ m/s}) / (3.00 \times 10^8 \text{ m/s}) = 9.3 \times 10^{-8}$$

- b) $\beta = v/c = (290 \text{ m/s}) / (3.00 \times 10^8 \text{ m/s}) = 9.7 \times 10^{-7}$

c) $v = 2.3v_{\text{sound}} = (2.3) (330 \text{ m/s})$ and

$$\beta = v/c = (2.3) (330 \text{ m/s}) / (3.00 \times 10^8 \text{ m/s}) = 2.5 \times 10^{-6}$$

d) Conversion $27,000 \text{ km/h} = 7500 \text{ m/s}$ so

$$\beta = v/c = (7500 \text{ m/s}) / (3.00 \times 10^8 \text{ m/s}) = 2.5 \times 10^{-5}$$

e) $(25 \text{ cm}/2 \text{ ns}) = 1.25 \times 10^8 \text{ m/s}$ so $\beta = v/c = (1.25 \times 10^8 \text{ m/s}) / (3.00 \times 10^8 \text{ m/s}) = 0.42$

f) $(10^{-14} \text{ m} / 0.35 \times 10^{-22} \text{ s}) = 2.857 \times 10^8 \text{ m/s}$

$$\beta = v/c = (2.857 \times 10^8 \text{ m/s}) / (3.00 \times 10^8 \text{ m/s}) = 0.95$$

13. From the Lorentz transformations

$$\Delta t' = \gamma [\Delta t - v\Delta x/c^2]$$

But $\Delta t' = 0$ in this case, so solving for v we find

$$v = c^2 \Delta t / \Delta x$$

Inserting the values $\Delta t = t_2 - t_1 = -a/2c$ and $\Delta x = x_2 - x_1 = a$,

$$v = c^2 (-a/2c) / a = -c/2$$

We conclude that the frame K' travels at a speed $c/2$ in the $-x$ -direction. Note that there is no motion in the transverse direction.

*14. There is no motion in the transverse direction, so $y = z = 3.5 \text{ m}$.

$$\gamma = \frac{1}{\sqrt{1 - \beta^2}} = \frac{1}{\sqrt{1 - 0.8^2}} = 5/3$$

$$x = \gamma (x' + vt') = \frac{5}{3} (2 \text{ m} + 0.8c(0)) = 10/3 \text{ m}$$

$$t = \gamma (t' + vx'/c^2) = \frac{5}{3} (0 + (0.8c)(2 \text{ m})/c^2) = 8.9 \times 10^{-9} \text{ s}$$

15. a)

$$t = \frac{\sqrt{x^2 + y^2 + z^2}}{c} = \frac{\sqrt{(3 \text{ m})^2 + (5 \text{ m})^2 + (10 \text{ m})^2}}{3.00 \times 10^8 \text{ m/s}} = 3.86 \times 10^{-8} \text{ s}$$

b) With $\beta = 0.8$ we find as in previous problems $\gamma = 5/3$. Then $y' = y = 5 \text{ m}$, $z' = z = 10 \text{ m}$,

$$x' = \gamma (x - vt) = \frac{5}{3} (3 \text{ m} - (2.40 \times 10^8 \text{ m/s})(3.86 \times 10^{-8} \text{ s})) = -10.4 \text{ m}$$

$$t' = \gamma (t - vx/c^2) = \frac{5}{3} \left[(3.86 \times 10^{-8} \text{ s}) - (2.40 \times 10^8 \text{ m/s})(3 \text{ m}) / (3.00 \times 10^8 \text{ m/s})^2 \right] = 51.0 \text{ ns}$$

c)

$$\frac{\sqrt{x'^2 + y'^2 + z'^2}}{t'} = \frac{\sqrt{(-10.4 \text{ m})^2 + (5 \text{ m})^2 + (10 \text{ m})^2}}{51.0 \times 10^{-9} \text{ s}} = 2.994 \times 10^8 \text{ m/s}$$

which agrees with c to within rounding errors.

16. Try setting $\Delta x' = 0 = \gamma(\Delta x - v\Delta t)$. Thus

$$0 = \Delta x - v\Delta t = a + va/2c$$

Solving for v we find $v = -2c$, which is impossible. There is no such frame K' .

17. For the smaller values of β we use the binomial expansion $\gamma = (1 - \beta^2)^{-1/2} \cong 1 + \beta^2/2$.

a) $\gamma \cong 1 + \beta^2/2 = 1 + 4.3 \times 10^{-15}$ b) $\gamma \cong 1 + \beta^2/2 = 1 + 4.7 \times 10^{-13}$

c) $\gamma \cong 1 + \beta^2/2 = 1 + 3.1 \times 10^{-12}$ d) $\gamma \cong 1 + \beta^2/2 = 1 + 3.1 \times 10^{-10}$

e) $\gamma = (1 - \beta^2)^{-1/2} = (1 - 0.42^2)^{-1/2} = 1.10$

f) $\gamma = (1 - \beta^2)^{-1/2} = (1 - 0.95^2)^{-1/2} = 3.20$

18. At the point of reflection the light has traveled a distance $L + v\Delta t_1 = c\Delta t_1$. On the return trip it travels $L - v\Delta t_2 = c\Delta t_2$. Then the total time is

$$\Delta t = \Delta t_1 + \Delta t_2 = \frac{2Lc}{c^2 - v^2} = \frac{2L/c}{1 - v^2/c^2}$$

But from time dilation we know (with $\Delta t' = \text{proper time} = 2L_0/c$)

$$\Delta t = \gamma \Delta t' = \frac{2L_0/c}{\sqrt{1 - v^2/c^2}}$$

Comparing these two results for Δt we get

$$\frac{2L/c}{1 - \frac{v^2}{c^2}} = \frac{2L_0/c}{\sqrt{1 - v^2/c^2}}$$

which reduces to

$$L = L_0 \sqrt{1 - v^2/c^2}$$

19. With a contraction of 1%, $L/L_0 = 0.99 = \sqrt{1 - v^2/c^2}$. Thus

$$1 - \beta^2 = (0.99)^2 = 0.9801$$

Solving for β , we find $\beta = 0.14$ or $v = 0.14c$.

20. The round-trip distance is $d = 40$ ly. Assume the same constant speed $v = \beta c$ for the entire round trip. In the rocket's reference frame the distance is only $d' = d\sqrt{1 - \beta^2}$. Then in the rocket's frame of reference

$$v = \frac{\text{distance}}{\text{time}} = \frac{d'}{40 \text{ y}} = \frac{40 \text{ ly} \sqrt{1 - \beta^2}}{40 \text{ y}} = c\sqrt{1 - \beta^2}$$

Rearranging

$$\beta = \frac{v}{c} = \sqrt{1 - \beta^2}$$

Solving for β we find $\beta = \sqrt{0.5}$, or $v = \sqrt{0.5}c \cong 0.71c$. To find the elapsed time t on earth, we know $t' = 40$ y, so

$$t = \gamma t' = \frac{1}{\sqrt{1 - \beta^2}} 40 \text{ y} = 56.6 \text{ y}$$

*21. In the muon's frame $t' = 2.2\mu\text{s}$, $d' = d\sqrt{1 - \beta^2}$ where $d = 9.5$ cm. Thus

$$v = \frac{d'}{t'} = \frac{d\sqrt{1 - \beta^2}}{t'}$$

Also $v = \beta c$, so

$$\beta = \frac{v}{c} = \frac{d\sqrt{1 - \beta^2}}{ct'}$$

Now all quantities are known except β . Solving for β we find $\beta = 1.4 \times 10^{-4}$.

22. Converting the speed to m/s we find $25,000 \text{ mi/h} = 11,176 \text{ m/s}$. From tables the distance is $3.84 \times 10^8 \text{ m}$. In the earth's frame of reference the time is the distance divided by speed, or

$$t = \frac{d}{v} = \frac{3.84 \times 10^8 \text{ m}}{11,176 \text{ m/s}} = 34,359 \text{ s}$$

In the astronauts' frame the time elapsed is $t' = t/\gamma = t\sqrt{1 - \beta^2}$. The time difference is

$$\Delta t = t - t' = t - t\sqrt{1 - \beta^2} = t \left[1 - \sqrt{1 - \beta^2} \right]$$

Evaluating numerically

$$\Delta t = 34,359 \text{ s} \left[1 - \sqrt{1 - \left(\frac{11,176 \text{ m/s}}{3.00 \times 10^8 \text{ m/s}} \right)^2} \right] = 2.4 \times 10^{-5} \text{ s}$$

23. $T' = \gamma T_0$, so we know that

$$\gamma = 5/3 = \frac{1}{\sqrt{1 - v^2/c^2}}$$

Solving for v we get

$$v = 4c/5$$

24. $L = L_0/\gamma$ so clearly $\gamma = 2$ in this case. Thus $2 = 1/\sqrt{1 - v^2/c^2}$ and solving for v we find $v = \sqrt{3} c/2$.

25. The clocks' rates differ by a factor of $\gamma = 1/\sqrt{1 - v^2/c^2}$. Since β is very small we will use the binomial theorem approximation $\gamma \cong 1 + \beta^2/2$. Then the time difference is

$$\Delta t = t - t' = t - \gamma t = t(\gamma - 1)$$

Using $\gamma - 1 \cong \beta^2/2$ and the fact that the time for the trip equals distance divided by speed,

$$\begin{aligned}\Delta t = t(\beta^2/2) &= \frac{8 \times 10^6 \text{ m} \left(\frac{375 \text{ m/s}}{3.00 \times 10^8 \text{ m/s}} \right)^2}{375 \text{ m/s}} \\ &= 1.67 \times 10^{-8} \text{ s} = 16.7 \text{ ns}\end{aligned}$$

*26. a) $L' = L/\gamma = L\sqrt{1 - v^2/c^2} = 3.58 \times 10^4 \text{ km} \sqrt{1 - 0.94^2} = 1.22 \times 10^4 \text{ km}$

b) Earth's frame:

$$t = L/v = \frac{3.58 \times 10^7 \text{ m}}{(0.94)(3.00 \times 10^8 \text{ m/s})} = 0.127 \text{ s}$$

Golf ball's frame:

$$t' = t/\gamma = 0.127 \text{ s} \sqrt{1 - 0.94^2} = 0.0433 \text{ s}$$

27. Spacetime invariant (see Section 2.9): $c^2\Delta t^2 - \Delta x^2 = c^2\Delta t'^2 - \Delta x'^2$. We know $\Delta x = 4 \text{ km}$, $\Delta t = 0$, and $\Delta x' = 5 \text{ km}$. Thus

$$\Delta t'^2 = \frac{\Delta x'^2 - \Delta x^2}{c^2} = \frac{(5000 \text{ m})^2 - (4000 \text{ m})^2}{(3.00 \times 10^8 \text{ m/s})^2} = 1.0 \times 10^{-10} \text{ s}^2$$

and $\Delta t' = 1.0 \times 10^{-5} \text{ s}$

28. Converting $v = 120 \text{ km/h} = 33.3 \text{ m/s}$. Now with $c = 100 \text{ m/s}$, we have $\beta = v/c = 0.333$

$$\gamma = \frac{1}{\sqrt{1 - \beta^2}} = \frac{1}{\sqrt{1 - 0.333^2}} = 1.061$$

We conclude that the moving person ages 6.1% slower.

29. Converting $v = 300 \text{ km/h} = 83.3 \text{ m/s}$. Now with $c = 100 \text{ m/s}$, we have $\beta = v/c = 0.833$

$$\gamma = \frac{1}{\sqrt{1 - \beta^2}} = \frac{1}{\sqrt{1 - 0.833^2}} = 1.81$$

So the length is $L = L_0/\gamma = 40/1.81 = 22.1 \text{ m}$

CHAPTER 2

30. Let subscript 1 refer to firing and subscript 2 to striking the target. Therefore we can see that $x_1 = 1$ m, $x_2 = 121$ m, and $t_1 = 3$ ns.

$$t_2 = t_1 + \frac{\text{distance}}{\text{speed}} = 3 \text{ ns} + \frac{120 \text{ m}}{0.98c} = 3 \text{ ns} + 408 \text{ ns} = 411 \text{ ns}$$

To find the four primed quantities we can use the Lorentz transformations with the known values of x_1 , x_2 , t_1 , and t_2 . Note that with $v = 0.8c$, $\gamma = \sqrt{1 - v^2/c^2} = 5/3$.

$$\begin{aligned} t'_1 &= \gamma(t_1 - vx_1/c^2) = 0.56 \text{ ns} \\ t'_2 &= \gamma(t_2 - vx_2/c^2) = 147 \text{ ns} \\ x'_1 &= \gamma(x_1 - vt_1) = 0.47 \text{ m} \\ x'_2 &= \gamma(x_2 - vt_2) = 37.3 \text{ m} \end{aligned}$$

- *31. Velocity addition

$$u_x = \frac{u'_x + v}{1 + vu'_x/c^2}$$

a)

$$u_x = \frac{0.7c + 0.8c}{1 + (0.7c)(0.8c)/c^2} = \frac{1.5c}{1.56} = 0.96c$$

b)

$$u_x = \frac{-0.7c + 0.8c}{1 + (-0.7c)(0.8c)/c^2} = \frac{0.1c}{0.44} = 0.23c$$

32. Velocity addition

$$u'_x = \frac{u_x - v}{1 - vu_x/c^2}$$

with $v = -0.8c$ and $u_x = 0.8c$.

$$u'_x = \frac{0.8c - (-0.8c)}{1 - (-0.8c)(0.8c)/c^2} = \frac{1.6c}{1.64} = 0.976c$$

33. Conversion: $110 \text{ km/h} = 30.556 \text{ m/s}$ and $140 \text{ km/h} = 38.889 \text{ m/s}$. Let $u_x = 30.556 \text{ m/s}$ and $v = -38.889 \text{ m/s}$. Our premise is that $c = 100 \text{ m/s}$. Then by velocity addition

$$u'_x = \frac{u_x - v}{1 - vu_x/c^2} = \frac{30.556 \text{ m/s} - (-38.889 \text{ m/s})}{1 - (-38.889 \text{ m/s})(30.556 \text{ m/s}) / (100 \text{ m/s})^2} = 62.1 \text{ m/s}$$

By symmetry each observer sees the other one traveling at the same speed.

34. From Example 2.5 we have

$$u = \frac{c}{n} \frac{1 + nv/c}{1 + v/nc}$$

For light traveling in opposite directions

$$\Delta u = \frac{c}{n} \left[\frac{1 + nv/c}{1 + v/nc} - \frac{1 - nv/c}{1 - v/nc} \right]$$

Because v/c is very small, use the binomial expansion:

$$\frac{1 + nv/c}{1 + v/nc} = (1 + nv/c) (1 + v/nc)^{-1} \cong (1 + nv/c) (1 - v/nc) \cong 1 + nv/c - v/nc$$

where we have dropped terms of order v^2/c^2 . Similarly

$$\frac{1 - nv/c}{1 - v/nc} \cong 1 - nv/c + v/nc$$

Thus

$$\Delta u \cong \frac{c}{n} [(1 + nv/c - v/nc) - (1 - nv/c + v/nc)] = \frac{2v}{n} (1 - 1/n) = 2v (1 - 1/n^2)$$

Evaluating numerically

$$\Delta u \cong 2(5 \text{ m/s}) \left(1 - \frac{1}{1.33^2} \right) = 4.35 \text{ m/s}$$

35. Clearly the speed of B is just $0.60c$. To find the speed of C use $u_x = 0.60c$ and $v = -0.60c$:

$$u'_x = \frac{u_x - v}{1 - vu_x/c^2} = \frac{0.60c - (-0.60c)}{1 - (-0.60c)(0.60c)/c^2} = 0.88c$$

*36. We can ignore the 400 km, since it's small compared with the earth to moon distance of $3.82 \times 10^8 \text{ m}$. The rotation rate is $\omega = 100 \text{ s}^{-1} \times 2\pi \text{ rad} = 2\pi \times 10^2 \text{ rad/s}$. Then the speed across the moon's surface is

$$v = \omega R = (2\pi \times 10^2 \text{ rad/s}) (3.82 \times 10^8 \text{ m}) = 2.40 \times 10^{11} \text{ m/s}$$

*37. Classical:

$$t = \frac{4205 \text{ m}}{0.98c} = 1.43 \times 10^{-5} \text{ s}$$

Then

$$N = N_0 \exp [-(\ln 2) t/t_{1/2}] = 14.6 \text{ or about 15 muons}$$

Relativistic:

$$t' = t/\gamma = \frac{1.43 \times 10^{-5} \text{ s}}{5} = 2.86 \times 10^{-6} \text{ s}$$

$$N = N_0 \exp [-(\ln 2) t/t_{1/2}] = 2710 \text{ muons}$$

Because of the exponential nature of the decay curve, a factor of five (shorter) in time results in many more muons surviving.

38. The circumference of the fixed point's rotational path is $2\pi R_e \cos(39^\circ)$, where R_e = radius of earth = 6378 km. Thus the circumference of the path is 31,143 km. the rotational speed of that point is $v = 31,143 \text{ km}/24 \text{ h} = 1298 \text{ km/h} = 360.46 \text{ m/s}$. The observatory clock runs slow by a factor of

$$\gamma = \frac{1}{\sqrt{1 - \beta^2}} \cong 1 + \beta^2/2 = 1 + 7.22 \times 10^{-13}$$

In 41.2 h the observatory clock is slow by $(41.2 \text{ h}) (7.22 \times 10^{-13}) = 2.9746 \times 10^{-11} \text{ h} = 107 \text{ ns}$. In 48.6 h it is slow by $(48.6 \text{ h}) (7.22 \times 10^{-13}) = 3.5089 \times 10^{-11} \text{ h} = 126 \text{ ns}$.

The Eastward-moving clock has a ground speed of $31,143 \text{ km}/41.2 \text{ h} = 755.9 \text{ km/h} = 210.0 \text{ m/s}$ and thus has a net speed of $210.0 \text{ m/s} + 360.5 \text{ m/s} = 570.5 \text{ m/s}$. For this clock

$$\gamma = \frac{1}{\sqrt{1 - \beta^2}} \cong 1 + \beta^2/2 = 1 + 1.81 \times 10^{-12}$$

and in 41.2 hours it runs slow by $(41.2 \text{ h}) (1.81 \times 10^{-12}) = 7.4572 \times 10^{-11} \text{ h} = 268 \text{ ns}$.

The Westward-moving clock has a ground speed of $31,143 \text{ km}/48.6 \text{ h} = 640.8 \text{ km/h} = 178.0 \text{ m/s}$ and thus has a net speed of $360.5 \text{ m/s} - 178.0 \text{ m/s} = 182.5 \text{ m/s}$. For this clock

$$\gamma = \frac{1}{\sqrt{1 - \beta^2}} \cong 1 + \beta^2/2 = 1 + 1.85 \times 10^{-13}$$

and in 48.6 hours it runs slow by $(48.6 \text{ h}) (1.85 \times 10^{-13}) = 8.991 \times 10^{-12} \text{ h} = 32 \text{ ns}$.

So our prediction is that the Eastward-moving clock is off by $107 \text{ ns} - 269 \text{ ns} = -162 \text{ ns}$, while the Westward-moving clock is off by $126 \text{ ns} - 32 \text{ ns} = 94 \text{ ns}$. These results are correct for special relativity but do not reconcile with those in the table in the text, because general relativistic effects are of the same order of magnitude.

39. The derivations of Equations (2.31) and (2.32) in the beginning of Section 2.10 will suffice. Mary receives signals at a rate ν' for t'_1 and a rate ν'' for t'_2 . Frank receives signals at a rate ν' for t_1 and a rate ν'' for t_2 .

40. $T = t_1 + t_2 = L/v + L/c + L/v - L/c = 2L/v$

Frank sends signals at rate ν , so Mary receives $\nu T = 2\nu L/v$ signals.

$$T' = t'_1 + t'_2 = 2L/\gamma v$$

Mary sends signals at rate ν , so Frank receives $\nu T' = 2\nu L/\gamma v$ signals.

41. $s^2 = x^2 + y^2 + z^2 - c^2 t^2$

Using the Lorentz transformation

$$\begin{aligned} s^2 &= \gamma^2(x' + vt')^2 + y'^2 + z'^2 - c^2\gamma^2(t' - vx'/c^2)^2 \\ &= x'^2\gamma^2(1 - v^2/c^2) + y'^2 + z'^2 - c^2t'^2\gamma^2(1 - v^2/c^2) \\ &= x'^2 + y'^2 + z'^2 - c^2t'^2 = s'^2 \end{aligned}$$

- *42. For a timelike interval $\Delta s^2 < 0$ so $\Delta x^2 < c^2 \Delta t^2$. We will prove by contradiction. Suppose that there is a frame K' in which the two events were simultaneous, so that $\Delta t' = 0$. Then by the spacetime invariant

$$\Delta x^2 - c^2 \Delta t^2 = \Delta x'^2 - c^2 \Delta t'^2 = \Delta x'^2$$

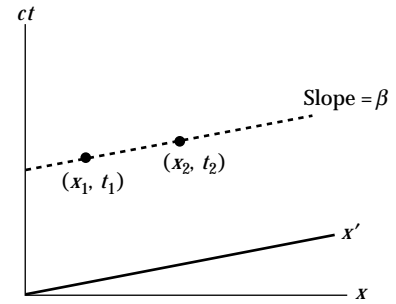
But since $\Delta x^2 < c^2 \Delta t^2$, this implies $\Delta x'^2 < 0$, which is impossible because $\Delta x'$ is real.

43. As in Problem 42, we know that for a spacelike interval $\Delta s^2 > 0$ so $\Delta x^2 > c^2 \Delta t^2$. Then in a frame K' in which the two events occur in the same place, $\Delta x' = 0$ and

$$\Delta x^2 - c^2 \Delta t^2 = \Delta x'^2 - c^2 \Delta t'^2 = -c^2 \Delta t'^2$$

But since $\Delta x^2 > c^2 \Delta t^2$ we have $c^2 \Delta t'^2 < 0$, which is impossible because $\Delta t'$ is real.

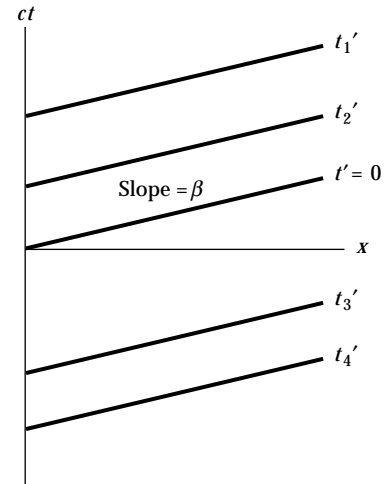
44. In order for two events to be simultaneous in K' , the two events must lie along the x' axis, or along a line parallel to the x' axis. The slope of the x' axis is $\beta = v/c$, so $v/c = \text{slope} = c \Delta t / \Delta x$. Solving for v , we find $v = c^2 \Delta t / \Delta x$. Since the slope of the x' axis must be less than one, we see that $\Delta x > c \Delta t$, so $s^2 = \Delta x^2 - c^2 \Delta t^2 > 0$ is required.



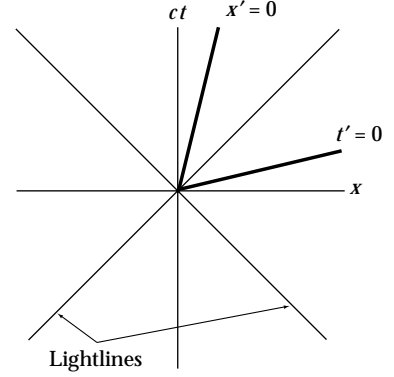
45. a) and b) To find the equation of the line use the Lorentz transformation. With $t' = 0$ we have $t' = 0 = \gamma(t - vx/c^2)$ or, rearranging, $ct = vx/c = \beta x$. Thus the graph of ct vs. x is a straight line with a slope of β .

c) Now with t' a constant the Lorentz transformation gives $t' = \gamma(t - vx/c^2)$. Again we solve for ct : $ct = \beta x - ct'/\gamma = \beta x + \text{constant}$. This line is parallel to the $t' = 0$ line we found earlier but shifted by the constant.

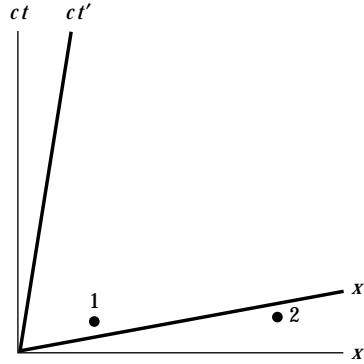
- d) As we saw in (c), the lines are parallel.



46. The diagram is shown. Note that there is only one worldline for light, and it bisects both the x, ct axes and the x', ct' axes. The x' and ct' axes are not perpendicular. This can be seen as a result of the Lorentz transformations, since $x' = 0$ defines the ct' axis and $t' = 0$ defines the x' axis.



47. The diagram shows that the events A and B that occur at the same time in K occur at different times in K'.



- *48. The Doppler shift gives

$$\lambda = \lambda_0 \sqrt{\frac{1 - \beta}{1 + \beta}}$$

With numerical values $\lambda_0 = 670$ nm and $\lambda = 540$ nm, solving this equation for β gives $\beta = 0.212$. The astronaut's speed is $v = \beta c = 6.4 \times 10^7$ m/s. Instead of a red light violation the astronaut gets a speeding ticket.

49. According to the fixed source (K) the signal and receiver move at speeds c and v , respectively, in opposite directions, so their relative speed is $c + v$. The time interval between receipt of signals is $\Delta t = \lambda/(c + v) = 1/\nu_0$. By time dilation

$$\Delta t' = \Delta t / \gamma = \frac{\lambda}{\gamma(c + v)}$$

Using $\lambda = c/\nu_0$ and $\gamma = 1/\sqrt{1 - v^2/c^2}$ we find

$$\Delta t' = \frac{c\sqrt{1 - v^2/c^2}}{\nu_0(c + v)} = \frac{\sqrt{1 - \beta^2}}{\nu_0(1 + \beta)}$$

$$\nu' = 1/\Delta t' = \frac{\nu_0(1+\beta)}{\sqrt{1-\beta^2}} = \nu_0 \sqrt{\frac{1+\beta}{1-\beta}}$$

50. For a fixed source and moving receiver, the length of the wave train is $cT + vT$. Since n waves are emitted during time T ,

$$\lambda = \frac{cT + vT}{n}$$

and the frequency $\nu = c/\lambda$ is

$$\nu = \frac{cn}{cT + vT}$$

As in the text $n = \nu_0 T'_0$ and $T'_0 = T/\gamma$. Therefore

$$\nu = \frac{c\nu_0 T/\gamma}{cT + vT} = \frac{\nu_0 \sqrt{1-\beta^2}}{1+\beta} = \nu_0 \sqrt{\frac{1-\beta}{1+\beta}}$$

*51.

$$\nu = \nu_0 \sqrt{\frac{1-\beta}{1+\beta}} = (400 \text{ Hz}) \sqrt{\frac{1-0.92}{1+0.92}} = 82 \text{ Hz}$$

52. The Doppler shift function

$$\nu' = \nu_0 \sqrt{\frac{1-\beta}{1+\beta}} \quad \begin{array}{ccc} \leftarrow \textcircled{3} & \textcircled{2} & \textcircled{1} \rightarrow \end{array} \quad \nu$$

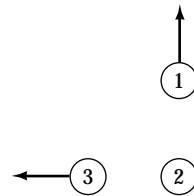
is the rate at which #1 and #2 receive signals from each other and the rate at which #2 and #3 receive signals from each other. But for signals between #1 and #3 the rate is

$$\nu'' = \nu' \sqrt{\frac{1-\beta}{1+\beta}} = \nu_0 \frac{1-\beta}{1+\beta}$$

53. The Doppler shift function

$$\nu' = \nu_0 \sqrt{\frac{1-\beta}{1+\beta}}$$

is the rate at which #1 and #2 receive signals from each other and the rate at which #2 and #3 receive signals from each other.



CHAPTER 2

As for #1 and #3 we will assume that these plumbing vans are non-relativistic ($v \ll c$). Otherwise it would be necessary to use the velocity addition law and apply the transverse Doppler shift. From the figure we see that

$$\nu' = \frac{1}{t_0 + (t_2 - t_1)}$$

Now $\nu_0 = 1/t_0$ and

$$t_2 - t_1 = 2x/c = \frac{2vt_0 \cos \theta}{c}$$

With an angle of 45° $\cos \theta = 1/\sqrt{2}$ and

$$\nu' = \frac{1}{1/\nu_0 + (2v \cos \theta)/c\nu_0} = \frac{\nu_0}{1 + (2v \cos \theta)/c} = \frac{\nu_0}{1 + \sqrt{2}v/c}$$

*54. The Doppler shift to higher wavelengths is (with $\lambda_0 = 589 \text{ nm}$)

$$\lambda = 700 \text{ nm} = \lambda_0 \sqrt{\frac{1 + \beta}{1 - \beta}}$$

Solving for β we find $\beta = 0.171$. Then

$$t = v/a = \frac{(0.171)(3.00 \times 10^8 \text{ m/s})}{25 \text{ m/s}^2} = 2.052 \times 10^6 \text{ s}$$

which is 23.75 days. One problem with this analysis is that we have only computed the time as measured by earth. We are not prepared to handle the non-inertial frame of the spaceship.

*55. Let the instantaneous momentum be in the x -direction and the force be in the y -direction. Then $d\vec{p} = \vec{F} dt = \gamma m d\vec{v}$ and $d\vec{v}$ is also in the y -direction. So we have

$$\vec{F} = \gamma m \frac{d\vec{v}}{dt} = \gamma m \vec{a}$$

56. The magnitude of the centripetal force is

$$\gamma m a = \gamma m \frac{v^2}{r}$$

for circular motion. For a charged particle $F = qvB$, so

$$qvB = \gamma m \frac{v^2}{r}$$

or, rearranging

$$\begin{aligned} qBr &= \gamma mv = p \\ r &= \frac{p}{qB} \end{aligned}$$

When the speed increases the momentum increases, and thus for a given value of B the radius must increase.

57.

$$\vec{p} = \gamma m \vec{v} = \frac{m \vec{v}}{\sqrt{1 - v^2/c^2}}$$

$$\vec{F} = \frac{d\vec{p}}{dt}$$

The momentum is the product of two factors that contain the velocity, so we apply the product rule for derivatives:

$$\begin{aligned} \vec{F} &= m \frac{d}{dt} \left[\frac{m \vec{v}}{\sqrt{1 - v^2/c^2}} \right] \\ &= m \left[\frac{d\vec{v}/dt}{\sqrt{1 - v^2/c^2}} + \vec{v} \frac{d}{dt} \left(\frac{1}{\sqrt{1 - v^2/c^2}} \right) \right] \\ &= \gamma m \vec{a} + m \vec{v} \left(-\frac{1}{2} \right) \left(-\frac{2v}{c^2} \right) \gamma^3 \frac{dv}{dt} \\ &= \gamma m \vec{a} + \gamma^3 m \vec{a} \left(\frac{v^2}{c^2} \right) \\ &= \gamma^3 m \vec{a} \left[1 - \frac{v^2}{c^2} + \frac{v^2}{c^2} \right] = \gamma^3 m \vec{a} \end{aligned}$$

58. From the previous problem $F = \gamma^3 m a$. We have $a = 10^{19} \text{ m/s}^2$ and $m = 1.67 \times 10^{-27} \text{ kg}$.

a)

$$\begin{aligned} \gamma &= \frac{1}{\sqrt{1 - v^2/c^2}} = \frac{1}{\sqrt{1 - 0.01^2}} = 1.00005 \\ F &= (1.00005)^3 (1.67 \times 10^{-27} \text{ kg}) (10^{19} \text{ m/s}^2) = 1.67 \times 10^{-8} \text{ N} \end{aligned}$$

b) As in (a) $\gamma = 1.005$ and $F = 1.70 \times 10^{-8} \text{ N}$

c) As in (a) $\gamma = 2.294$ and $F = 2.02 \times 10^{-7} \text{ N}$

d) As in (a) $\gamma = 7.0888$ and $F = 5.95 \times 10^{-6} \text{ N}$

59. $p = \gamma m v$, with

$$\begin{aligned} \gamma &= \frac{1}{\sqrt{1 - v^2/c^2}} = \frac{1}{\sqrt{1 - 0.92^2}} = 2.5516 \\ m &= \frac{p}{\gamma v} = \frac{10^{-16} \text{ kg} \cdot \text{m/s}}{(2.5516)(0.92)(3.00 \times 10^8 \text{ m/s})} = 1.42 \times 10^{-25} \text{ kg} \end{aligned}$$

*60. The initial momentum is

$$p_0 = \gamma m v = \frac{1}{\sqrt{1 - 0.5^2}} m (0.5c) = 0.57735 mc$$

a) $p/p_0 = 1.01$

$$\begin{aligned} 1.01 &= \frac{\gamma m v}{0.57735 mc} \\ \gamma v &= (1.01)(0.57735 c) = .58312 c \end{aligned}$$

Substituting for γ and solving for v ,

$$v = \left[\frac{1}{(.58312 c)^2} + \frac{1}{c^2} \right]^{-1/2} = 0.504 c$$

b) Similarly

$$v = \left[\frac{1}{(.63509 c)^2} + \frac{1}{c^2} \right]^{-1/2} = 0.536 c$$

c) Similarly

$$v = \left[\frac{1}{(1.1547 c)^2} + \frac{1}{c^2} \right]^{-1/2} = 0.756 c$$

61. 230-MeV protons have $K = 230$ MeV and $E = K + E_0 = 1168$ MeV. Then

$$p = \frac{\sqrt{E^2 - E_0^2}}{c} = 696.0 \text{ MeV}/c$$

Converting to SI units

$$p = 696.0 \text{ MeV}/c \left(\frac{1.60 \times 10^{-13} \text{ J}}{\text{MeV}} \right) \left(\frac{c}{3.00 \times 10^8 \text{ m/s}} \right) = 3.71 \times 10^{-19} \text{ kg} \cdot \text{m/s}$$

From Problem 56

$$B = \frac{p}{qr} = \frac{3.71 \times 10^{-19} \text{ kg} \cdot \text{m/s}}{(1.60 \times 10^{-19} \text{ C})(15 \text{ m})} = 0.155 \text{ T}$$

62. Initially Mary throws her ball with velocity (primes showing the measurements are in Mary's frame):

$$u'_{M_x} = 0 \quad u'_{M_y} = -u_0$$

After the elastic collision, the signs on the above expressions are reversed, so the change in momentum as measured by Mary is

$$\Delta p'_M = \frac{mu_0}{\sqrt{1 - u_0^2/c^2}} - \frac{-mu_0}{\sqrt{1 - u_0^2/c^2}} = \frac{2mu_0}{\sqrt{1 - u_0^2/c^2}}$$

Now for Frank's ball, we know $u_{F_x} = 0$ and $u_{F_y} = u_0$. The velocity transformations give for Frank's ball as measured by Mary

$$u'_{F_x} = -v \quad u'_{F_y} = u_0 \sqrt{1 - v^2/c^2}$$

To find γ for Frank's ball, note that $u'_{F_x} + u'_{F_y} = v^2 + u_0^2 (1 - v^2/c^2)$
Then

$$\gamma = \frac{1}{\sqrt{1 - u'^2_F/c^2}} = \frac{1}{\sqrt{1 - v^2/c^2 - u_0^2 (1 - v^2/c^2) / c^2}} = \frac{1}{\sqrt{(1 - u_0^2/c^2) (1 - v^2/c^2)}}$$

Using $p' = \gamma m u'$ along with the reversal of velocities in an elastic collision, we find

$$\begin{aligned} \Delta p'_F &= \gamma m (-u_0) \sqrt{1 - v^2/c^2} - \gamma m u_0 \sqrt{1 - v^2/c^2} = -2\gamma m u_0 \sqrt{1 - v^2/c^2} \\ &= \frac{-2m u_0 \sqrt{1 - v^2/c^2}}{\sqrt{(1 - u_0^2/c^2) (1 - v^2/c^2)}} = \frac{-2m u_0}{\sqrt{(1 - u_0^2/c^2)}} \end{aligned}$$

Finally

$$\Delta p' = \Delta p'_F + \Delta p'_M = \frac{-2m u_0 + 2m u_0}{\sqrt{(1 - u_0^2/c^2)}} = 0$$

as required.

63. To prove by contradiction, suppose that $K = \frac{1}{2}\gamma m v^2$. Then

$$K = E - E_0 = \gamma m c^2 - m c^2 = (\gamma - 1) m c^2 = \frac{1}{2}\gamma m v^2$$

This implies $\gamma - 1 = v^2/2c^2$, or $\gamma = 1 + v^2/2c^2$, which is clearly false.

64. The source of the energy is the internal energy associated with the change of state, commonly called that latent heat of fusion L_f . Let m be the mass equivalent of 2 grams and M be the mass of ice required.

$$m = \frac{E}{c^2} = \frac{L_f M}{c^2}$$

Rearranging

$$M = \frac{m c^2}{L_f} = \frac{(0.002 \text{ kg}) (3.00 \times 10^8 \text{ m/s})^2}{334 \times 10^3 \text{ J/kg}} = 5.39 \times 10^8 \text{ kg}$$

65. In general $K = (\gamma - 1) m c^2$, so $\gamma = 1 + K/mc^2$. For 9 GeV electrons:

$$\gamma = 1 + \frac{9000 \text{ MeV}}{0.511 \text{ MeV}} = 1.76 \times 10^4$$

Then from the definition of γ we have

$$\beta = \sqrt{1 - \frac{1}{\gamma^2}} = \sqrt{1 - \frac{1}{(1.76 \times 10^4)^2}} = 1 - 1.6 \times 10^{-9}$$

Thus $v = (1 - 1.6 \times 10^{-9}) c = 0.9999999984 c$. For 3.1 GeV positrons:

$$\gamma = 1 + \frac{3100 \text{ MeV}}{0.511 \text{ MeV}} = 6068$$

$$\beta = \sqrt{1 - \frac{1}{(6068)^2}} = 1 - 1.4 \times 10^{-8}$$

Thus $v = (1 - 1.4 \times 10^{-8}) c = 0.9999999986 c$.

66. Note that the proton's mass is $938 \text{ MeV}/c^2$. In general $K = (\gamma - 1)mc^2$, so $\gamma = 1 + K/mc^2$. Then from the definition of γ we have

$$\beta = \sqrt{1 - \frac{1}{\gamma^2}}$$

For the first section $K = 0.750 \text{ MeV}$, and

$$\gamma = 1 + \frac{0.750 \text{ MeV}}{938 \text{ MeV}} = 1.00080$$

$$\beta = \sqrt{1 - \frac{1}{\gamma^2}} = \beta = \sqrt{1 - \frac{1}{1.00080^2}} = 0.040$$

Thus $v = 0.04 c$ at the end of the first stage. For the other stages the computations are similar, and we tabulate the results:

$K \text{ (GeV)}$	γ	β
0.400	1.43	0.71
8	9.53	0.994
150	160.9	0.99998
1000	1067	0.9999996

*67. a)

$$p = \gamma mu = \frac{(511 \text{ keV}/c^2)(0.01 c)}{\sqrt{1 - 0.01^2}} = 5.11 \text{ keV}/c$$

$$E = \gamma mc^2 = \frac{(511 \text{ keV}/c^2)(c^2)}{\sqrt{1 - 0.01^2}} = 511.03 \text{ keV}$$

$$K = E - E_0 = 511.03 \text{ keV} - 511.00 \text{ keV} = 30 \text{ eV}$$

The results for (b) and (c) follow with similar computations and are tabulated:

β	$p \text{ (keV}/c)$	$E \text{ (keV)}$	$K \text{ (keV)}$
0.1	51.4	513.6	2.6
0.9	1055	1172	661

*68. $E = 2E_0 = \gamma E_0$ so $\gamma = 2$. Then

$$\beta = \sqrt{1 - \frac{1}{\gamma^2}} = \frac{\sqrt{3}}{2}$$

and $v = \sqrt{3}c/2$.

69. For a constant force, work = kinetic energy change = $Fd = mc^2/4$, because $25\% = 1/4$.

$$d = \frac{mc^2}{4F} = \frac{(80 \text{ kg})(3.00 \times 10^8 \text{ m/s})^2}{4(8 \text{ N})} = 2.25 \times 10^{17} \text{ m} = 23.8 \text{ ly}$$

70. $E = K + E_0 = 2E_0 + E_0 = 3E_0 = \gamma E_0$, so $\gamma = 3$. Then

$$\beta = \sqrt{1 - \frac{1}{\gamma^2}} = \beta = \sqrt{1 - \frac{1}{3^2}} = \frac{2\sqrt{2}}{3} \cong 0.943$$

Thus $v \cong 0.943c$.

71. a) $E = K + E_0 = 0.1E_0 + E_0 = 1.1E_0 = \gamma E_0$, so $\gamma = 1.1$. Then

$$\beta = \sqrt{1 - \frac{1}{\gamma^2}} = \beta = \sqrt{1 - \frac{1}{1.1^2}} = 0.417$$

and $v = 0.417c$.

b) As in (a) $\gamma = 2$ and $v = \sqrt{3}c/2$.

c) As in (a) $\gamma = 11$ and $v = 0.996c$.

72.

$$K = E - E_0 = \frac{E_0}{\sqrt{1 - \beta^2}} - E_0$$

$$K + E_0 = \frac{E_0}{\sqrt{1 - \beta^2}}$$

Rearranging

$$1 - \beta^2 = \left(\frac{E_0}{K + E_0} \right)^2$$

$$\beta^2 = 1 - \left(\frac{E_0}{K + E_0} \right)^2$$

$$\beta = \sqrt{1 - \left(\frac{E_0}{K + E_0} \right)^2}$$

73. Using $E = \gamma mc^2$ along with $p = \gamma mv$ we see that $\gamma = E/c^2 = p/mv$. Solving for v/c we find $\beta = v/c = pc/E$.

- *74. It is the same for protons, electrons, or any particle.

$$K = (\gamma - 1) mc^2 = 1.01 \left(\frac{1}{2} mv^2 \right) = 0.505 mc^2 \beta^2$$

$$\gamma - 1 = \frac{1}{\sqrt{1 - \beta^2}} - 1 = 0.505 \beta^2$$

Rearranging and solving for β , we find $\beta = 0.114$ or $v = 0.114 c$.

75. Converting $0.1 \text{ ounce} = 2.835 \times 10^{-3} \text{ kg}$.

$$E = mc^2 = (2.835 \times 10^{-3} \text{ kg}) (3.00 \times 10^8 \text{ m/s})^2 = 2.55 \times 10^{14} \text{ J}$$

Eating 10 ounces results in a factor of 100 greater mass-energy increase, or $2.55 \times 10^{16} \text{ J}$. This is a small increase compared with your original mass-energy, but it will tend to increase your weight; depending on how they are prepared, peanuts generally contain about 100 kcal of food energy per ounce.

76. The energy needed equals the kinetic energy of the spaceship.

$$\begin{aligned} K &= (\gamma - 1) mc^2 = \left(\frac{1}{\sqrt{1 - \beta^2}} - 1 \right) mc^2 \\ &= \left(\frac{1}{\sqrt{1 - 0.3^2}} - 1 \right) (10^4 \text{ kg}) (3.00 \times 10^8 \text{ m/s})^2 = 4.35 \times 10^{19} \text{ J} \end{aligned}$$

or 4.35% of 10^{21} J .

- *77. Up to Equation (2.56) the derivation in the text is complete. Then using the integration by parts formula

$$\int x dy = xy - \int y dx$$

and noting that in this case $x = u$ and $y = \gamma u$, we have

$$\int u d(\gamma u) = \gamma u^2 - \int \gamma u du$$

Thus

$$\begin{aligned} K &= m \int_0^{\gamma u} u d(\gamma u) = \gamma m u^2 - m \int \gamma u du \\ &= \gamma m u^2 - m \int \frac{u}{\sqrt{1 - u^2/c^2}} du \end{aligned}$$

Using integral tables or simple substitution

$$\begin{aligned}
 K &= \gamma m u^2 + m c^2 \sqrt{1 - u^2/c^2} \Big|_0^u \\
 &= \gamma m u^2 + m c^2 \sqrt{1 - u^2/c^2} - m c^2 \\
 &= \frac{m c^2 + m c^2 (1 - u^2/c^2)}{\sqrt{1 - u^2/c^2}} - m c^2 = \gamma m c^2 - m c^2
 \end{aligned}$$

78. Converting $0.11 \text{ cal/g/}^\circ\text{C} = 460 \text{ J/kg/}^\circ\text{C} = c_V$ (specific heat). From thermodynamics the energy ΔE used to change the temperature by ΔT is $m c_V \Delta T$. Thus

$$\Delta E = (1000 \text{ kg}) (460 \text{ J/(kg} \cdot ^\circ\text{C)}) (0.5^\circ\text{C}) = 2.30 \times 10^5 \text{ J}$$

$$\Delta m = \frac{\Delta E}{c^2} = \frac{2.30 \times 10^5 \text{ J}}{(3.00 \times 10^8 \text{ m/s})^2} = 2.56 \times 10^{-12} \text{ kg}$$

The source of this energy is the internal energy of the arrangement of atoms and molecules prior to the collision.

79.

$$\begin{aligned}
 E_b &= [2m_p + 2m_n - m(\text{He})] c^2 \\
 &= [2(1.007276 \text{ u}) + 2(1.008665 \text{ u}) - 4.001505 \text{ u}] c^2 \left(\frac{931.494 \text{ MeV}}{c^2 \cdot \text{u}} \right) = 28.3 \text{ MeV}
 \end{aligned}$$

80.

$$\begin{aligned}
 \Delta E &= [m_n - m_p - m_e] c^2 \\
 &= [1.008665 \text{ u} - 1.007276 \text{ u} - 0.000549 \text{ u}] c^2 \left(\frac{931.494 \text{ MeV}}{c^2 \cdot \text{u}} \right) = 0.782 \text{ MeV}
 \end{aligned}$$

*81.

$$\begin{aligned}
 E &= K + E_0 = 1 \text{ TeV} + 938 \text{ MeV} \cong 1 \text{ TeV} \\
 p &= \frac{\sqrt{E^2 - E_0^2}}{c} = \frac{\sqrt{(1 \text{ TeV} + 938 \text{ MeV})^2 - (938 \text{ MeV})^2}}{c} = 1.000938 \text{ TeV}/c \\
 \gamma &= \frac{E + E_0}{E_0} = \frac{1.000938 \text{ TeV}}{0.000938 \text{ TeV}} = 1067 \\
 \beta^2 &= 1 - \frac{1}{\gamma^2} = 1 - 8.78 \times 10^{-7} \\
 \beta &= \sqrt{1 - 8.78 \times 10^{-7}} \cong 1 - 4.39 \times 10^{-7} \\
 v &= \beta c \cong 0.999999561 c
 \end{aligned}$$

$$82. \text{ a) } E = \sqrt{p^2 c^2 + E_0^2} = \sqrt{(30 \text{ GeV})^2 + (511 \text{ keV})^2} \cong 30.0 \text{ GeV}$$

$$K = E - E_0 = 30.0 \text{ GeV}$$

$$\text{b) } E = \sqrt{p^2 c^2 + E_0^2} = \sqrt{(30 \text{ GeV})^2 + (0.938 \text{ GeV})^2} = 30.015 \text{ GeV}$$

$$K = E - E_0 = 30.015 \text{ GeV} - 0.938 \text{ GeV} = 29.08 \text{ GeV}$$

$$*83. E = K + E_0 = 200 \text{ MeV} + 106 \text{ MeV} = 306 \text{ MeV}$$

$$p = \frac{\sqrt{E^2 - E_0^2}}{c} = \frac{\sqrt{(306 \text{ MeV})^2 - (106 \text{ MeV})^2}}{c} = 287.05 \text{ MeV}/c$$

$$\gamma = \frac{E}{E_0} = \frac{306 \text{ MeV}}{106 \text{ MeV}} = 2.887$$

$$\beta = \sqrt{1 - \frac{1}{\gamma^2}} = 0.938 \quad \text{so } v = 0.938 c$$

84. a) In the inertial frame moving with the negative charges in wire 1, the negative charges in wire 2 are stationary, but the positive charges are moving. The density of the positive charges in wire 2 is thus greater than the density of negative charges, and there is a net attraction between the wires.

b) By the same reasoning as in (a), note that the positive charges in wire 2 will be stationary and have a normal density, but the negative charges are moving and have an increased density, causing a net attraction between the wires.

c) There are two facts to be considered. First, (a) and (b) are consistent with the physical result being independent of inertial frame. Second, we know from classical physics that two parallel wires carrying current in the same direction attract each other. That is, the same result is achieved in the “lab” frame.

*85. As in the solution to Problem 21 we have

$$\beta = \frac{v}{c} = \frac{d\sqrt{1 - \beta^2}}{ct'}$$

where d is the length of the particle track and t' the particle's lifetime in its rest frame. In this problem $t' = 8.2 \times 10^{-11} \text{ s}$ and $d = 24 \text{ mm}$. Solving the above equation we find $\beta = 0.698$. Then

$$E = \frac{E_0}{\sqrt{1 - \beta^2}} = \frac{1672 \text{ MeV}}{\sqrt{1 - .698^2}} = 2330 \text{ MeV}$$

86.

$$\begin{aligned}
 F &= \frac{dp}{dt} = \frac{d}{dt}(\gamma mv) = \frac{d}{dt} \left[mv \left(1 - \frac{v^2}{c^2} \right)^{-1/2} \right] \\
 &= m\gamma \frac{dv}{dt} - \frac{mv}{2} \gamma^3 \left(-\frac{2v}{c^2} \right) \frac{dv}{dt} \\
 &= m\gamma \frac{dv}{dt} \left[1 + \frac{v^2 \gamma^2}{c^2} \right] = m\gamma \frac{dv}{dt} \left[1 + \frac{v^2/c^2}{1 - v^2/c^2} \right] \\
 &= m\gamma \frac{dv}{dt} \left[\frac{1}{1 - v^2/c^2} \right] = m\gamma^3 \frac{dv}{dt} = m \frac{dv}{dt} \frac{1}{(1 - v^2/c^2)^{3/2}}
 \end{aligned}$$

*87. The number n received by Frank at ν' is half the number sent by Mary at that rate, or $\nu L/\gamma v$. The detected time of turnaround is

$$t = \frac{n}{\nu'} = \frac{\nu L/\gamma v}{\nu \sqrt{(1 - \beta)/(1 + \beta)}} = \frac{L\sqrt{1 + \beta}}{\gamma v \sqrt{1 - \beta}} = \frac{L(1 + \beta)}{v} = \frac{L}{v} + \frac{L}{c}$$

Similarly, the number n' received by Mary at ν' is

$$n' = \nu' \frac{T'}{2} = \nu \sqrt{\frac{1 - \beta}{1 + \beta}} \frac{L}{\gamma v} = \frac{\nu L(1 - \beta)}{v}$$

Her turnaround time is $T'/2 = L/\gamma v$.

88. For Frank $t_2 = T - t_1 = L/v - L/c$

$$\# \text{ signals} = \nu'' t_2 = \nu \sqrt{\frac{1 + \beta}{1 - \beta}} \left(\frac{L}{v} - \frac{L}{c} \right) = \frac{\nu L}{\gamma v}$$

$$\text{Total number received} = \frac{\nu L}{\gamma v} + \frac{\nu L}{\gamma v} = \frac{2\nu L}{\gamma v}$$

$$\text{Mary's age} = \frac{\text{total number received}}{\nu} = \frac{2L}{\gamma v}$$

For Mary $t'_2 = T' - t'_1 = L/\gamma v$

$$\# \text{ signals} = \nu'' t'_2 = \nu \sqrt{\frac{1 + \beta}{1 - \beta}} \frac{L}{\gamma v} = \frac{\nu L}{v} (1 + \beta)$$

$$\text{Total number received} = \frac{\nu L}{v} (1 - \beta + 1 + \beta) = \frac{2\nu L}{v}$$

$$\text{Frank's age} = \frac{\text{total number received}}{\nu} = \frac{2L}{v}$$

89. a) From Table 2.1

$$\text{number} = \frac{\nu L}{v} (1 - \beta) = \frac{(52 \text{ y}^{-1}) (4 \text{ ly})}{0.8 c} (1 - 0.8) = 52$$

b)

$$t_1 = \frac{L}{v} + \frac{L}{c} = \frac{4 \text{ ly}}{0.8 c} + \frac{4 \text{ ly}}{c} = 9 \text{ y}$$

$$\text{number} = \nu' t_1 = \frac{\nu L}{v} \sqrt{1 - \beta^2} = 156$$

c) Frank:

$$\nu'' t'_2 = \frac{\nu L}{v} \sqrt{1 - \beta^2} = 156$$

so the total is $156 + 156 = 312$.

Mary: $\text{number} = 2\nu L/v = 520$

d) Frank: $T = 2L/v = 10 \text{ y}$ Mary: $T' = 2L/\gamma v = 6 \text{ y}$

e) From part (c) 520 weeks = 10 years and 312 weeks = 6 years, which checks with (d).

90. a) $K = E + E_0 = 200E_0$ so $K = 199E_0 = 199 (511 \text{ keV}) = 102 \text{ MeV}$

b) $\gamma = 200$

$$\beta = \sqrt{1 - \frac{1}{\gamma^2}} = 0.9999875$$

$$v = 0.9999875 c$$

c)

$$p = \frac{\sqrt{E^2 - E_0^2}}{c} = \frac{\sqrt{(200 \times 511 \text{ keV})^2 - (511 \text{ keV})^2}}{c} = 102 \text{ MeV}/c$$

91. For the proton

$$p = \gamma m u = \frac{1}{\sqrt{1 - 0.9^2}} (938 \text{ MeV}/c^2) (0.9 c) = 1940 \text{ MeV}/c$$

For the electron

$$E = \sqrt{p^2 c^2 + E_0^2} = \sqrt{(1940 \text{ MeV})^2 + (0.511 \text{ MeV})^2} = 1940 \text{ MeV}$$

$$\gamma = \frac{E}{E_0} = \frac{1940 \text{ MeV}}{0.511 \text{ MeV}} = 3797$$

$$\beta = \sqrt{1 - \frac{1}{\gamma^2}} = \sqrt{1 - \frac{1}{3797^2}} = \sqrt{1 - 6.94 \times 10^{-8}} \cong 1 - 3.97 \times 10^{-8}$$

$$v = (1 - 3.97 \times 10^{-8}) c$$

b) For the proton

$$K = (\gamma - 1) E_0 = \left(\frac{1}{\sqrt{1 - 0.9^2}} - 1 \right) (938 \text{ MeV}) = 1214 \text{ MeV}$$

For the electron

$$\begin{aligned} \gamma &= \frac{K + E_0}{E_0} = \frac{1214 \text{ MeV} + 0.511 \text{ MeV}}{0.511 \text{ MeV}} = 2377 \\ \beta &= \sqrt{1 - \frac{1}{\gamma^2}} = \sqrt{1 - \frac{1}{2377^2}} = \sqrt{1 - 1.77 \times 10^{-7}} \cong 1 - 8.85 \times 10^{-8} \\ v &= (1 - 8.85 \times 10^{-8}) c \end{aligned}$$

92. In the frame of the decaying K^0 meson, the pi mesons must recoil with equal speeds in opposite directions in order to conserve momentum. In that reference frame the available kinetic energy is $498 \text{ MeV} - 2(140 \text{ MeV}) = 218 \text{ MeV}$. The pi mesons share this equally, so each one has a kinetic energy of 109 MeV in that frame. The speed of each pi meson can be found:

$$\begin{aligned} \gamma &= \frac{K + E_0}{E_0} = \frac{109 \text{ MeV} + 140 \text{ MeV}}{140 \text{ MeV}} = 1.779 \\ u &= \sqrt{1 - \frac{1}{\gamma^2}} c = 0.827 c \end{aligned}$$

The greatest and least speeds in the lab frame are obtained when the pi mesons are released in the forward and backward directions. Then by the velocity addition laws:

$$\begin{aligned} v_{\max} &= \frac{0.9 c + 0.827 c}{1 + (0.9)(0.827)} = 0.990 c \\ v_{\min} &= \frac{0.9 c - 0.827 c}{1 - (0.9)(0.827)} = 0.285 c \end{aligned}$$